

>> RP-1008W**8-P Fast Ethernet Web Smart Switch**

8 ports 10M/100M SOHO Web Smart Fast Ethernet Switch that is designed for small or medium network environment to strengthen its network connection. This product is compact in size, making it ideal for SOHO users with limited space. It is a superb choice for expanding your network.

**Feature**

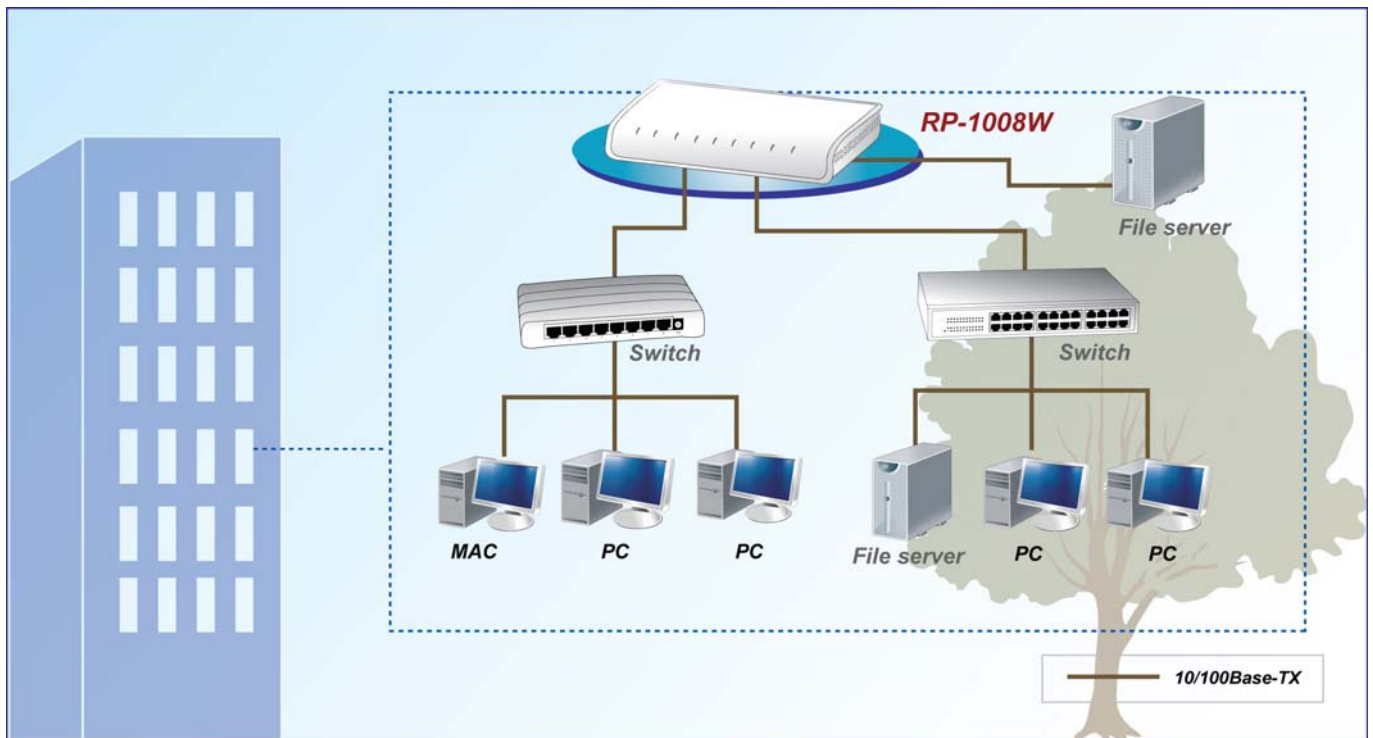
- Supports real time status(link,speed, duplex) of each port
- Supports port setting for N-Way or force mode operation
- Supports Broadcast Storm Protection
- Supports Maximum Packet Length 1536 or 1552
- Supports Port-bases VLAN
- Supports two priority queues for QoS
- Supports weighted round robin scheduling for queues
- Supports Port-bases / 802.1p / Diff serv. priority three types of CoS

Specification

Standards	<ul style="list-style-type: none"> • IEEE 802.3 10BaseT • IEEE 802.3u 100Base TX • IEEE 802.3x Flow Control • IEEE 802.1Q VLAN Tagging • IEEE 802.1p, Class of Service, Priority Protocols
Interface	<ul style="list-style-type: none"> • 8 * RJ45 ports, with 10/100Mbps
Transmission method	<ul style="list-style-type: none"> • Store-and-forward
Buffer Memory	<ul style="list-style-type: none"> • 512K bits
Mac Address	<ul style="list-style-type: none"> • 1K
Smart Features	<ul style="list-style-type: none"> • Port-based VLAN: Maximum 5/8 • QoS: 2 Queues • Management: Password-protected Access, Port Settings,

	Web-base Management, Graphic User Interface
Filtering/Forwarding Rates	<ul style="list-style-type: none"> • 100Mbps port - 148,800pps • 10Mbps port - 14,880pps
Transmission Media	<ul style="list-style-type: none"> • 10BaseT Cat. 3,4,5 UTP/STP • 100BaseTX Cat. 5 UTP/STP
LED Indicators	<ul style="list-style-type: none"> • Per Port: Link/Act • Per Unit: Power
Power	<ul style="list-style-type: none"> • DC7.5V 0.8A adapter
Environment	<ul style="list-style-type: none"> • Operating temperature : 0°C to 40°C • Humidity:10% to 90% (Non-Condensing)
Dimension	<ul style="list-style-type: none"> • 140* 105* 25 mm
Certifications	<ul style="list-style-type: none"> • FCC, CE

Application



Ordering information

RP-1008W

8-P Fast Ethernet Web Smart Switch